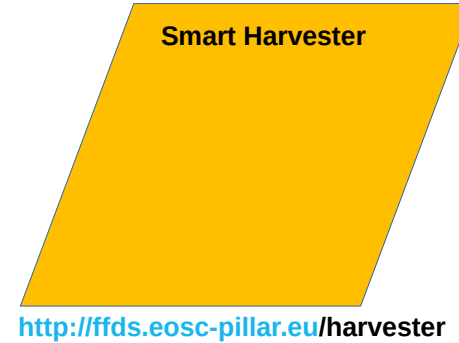
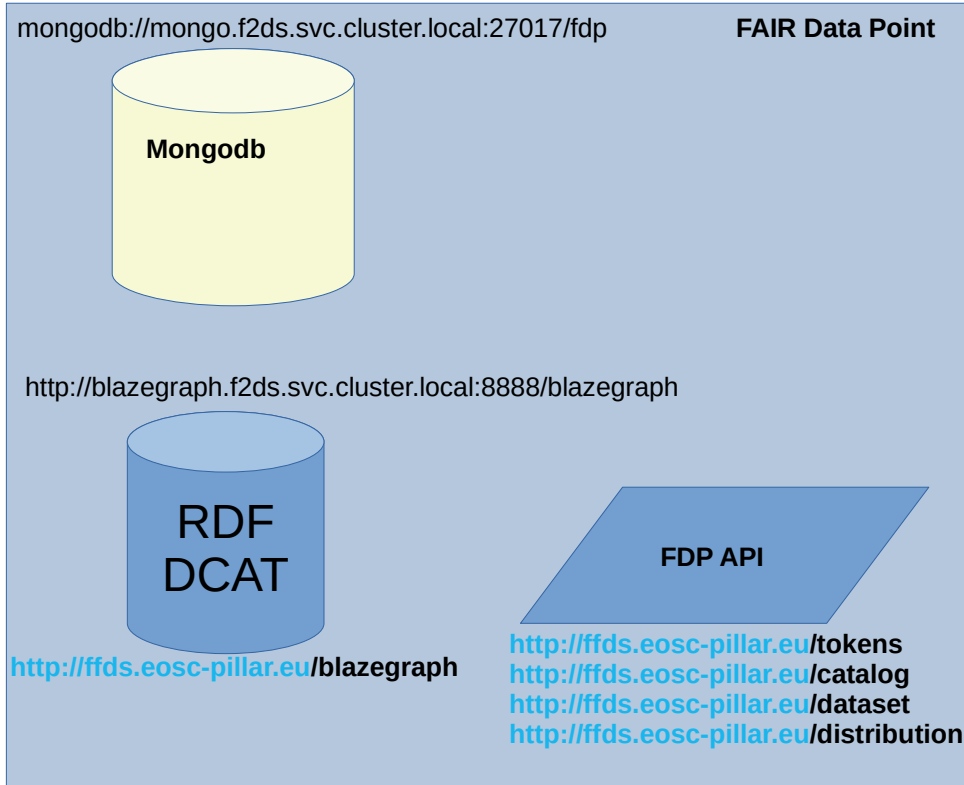


FFDS - Federated FAIR Data Space

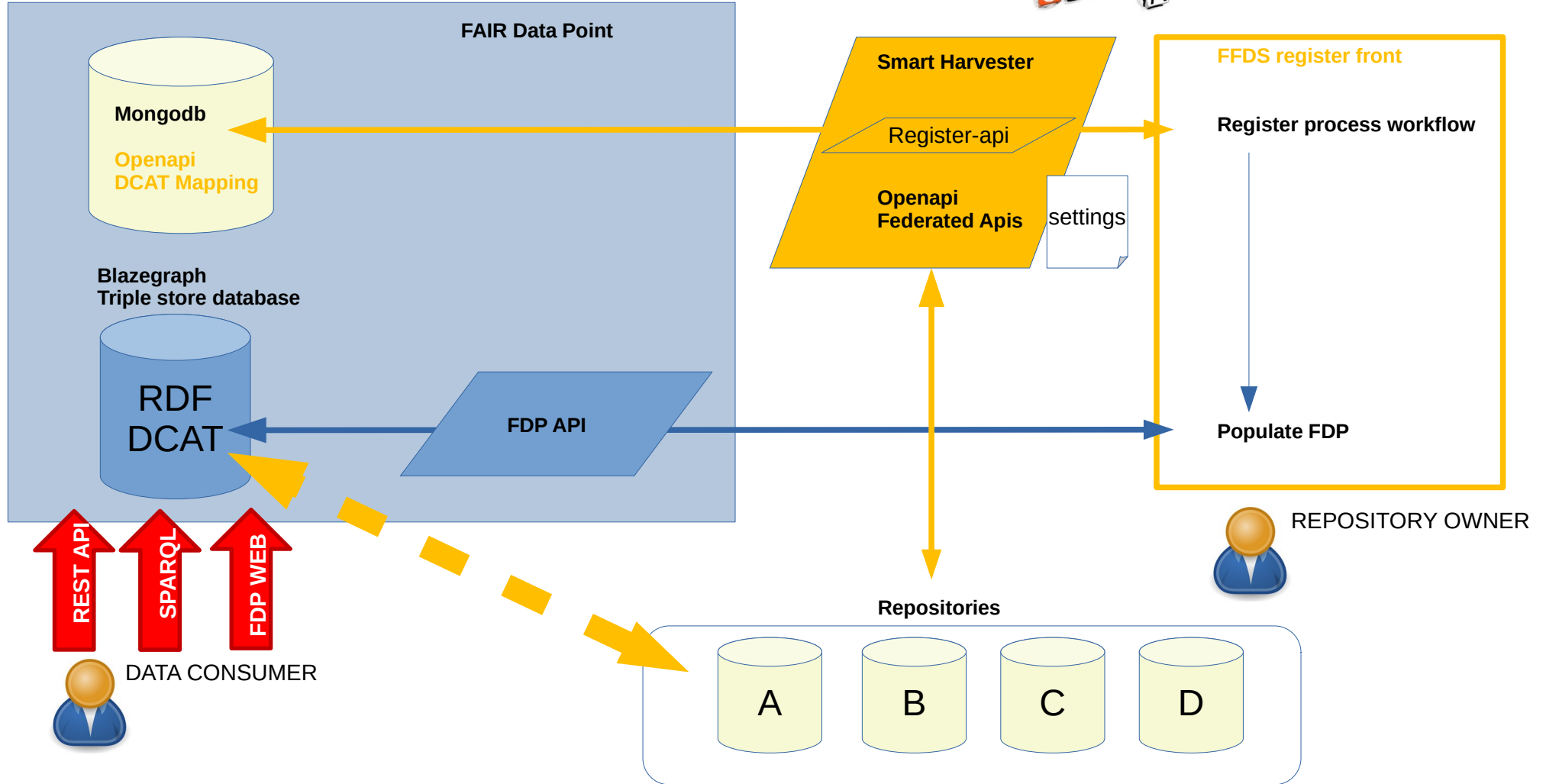


setting.json :

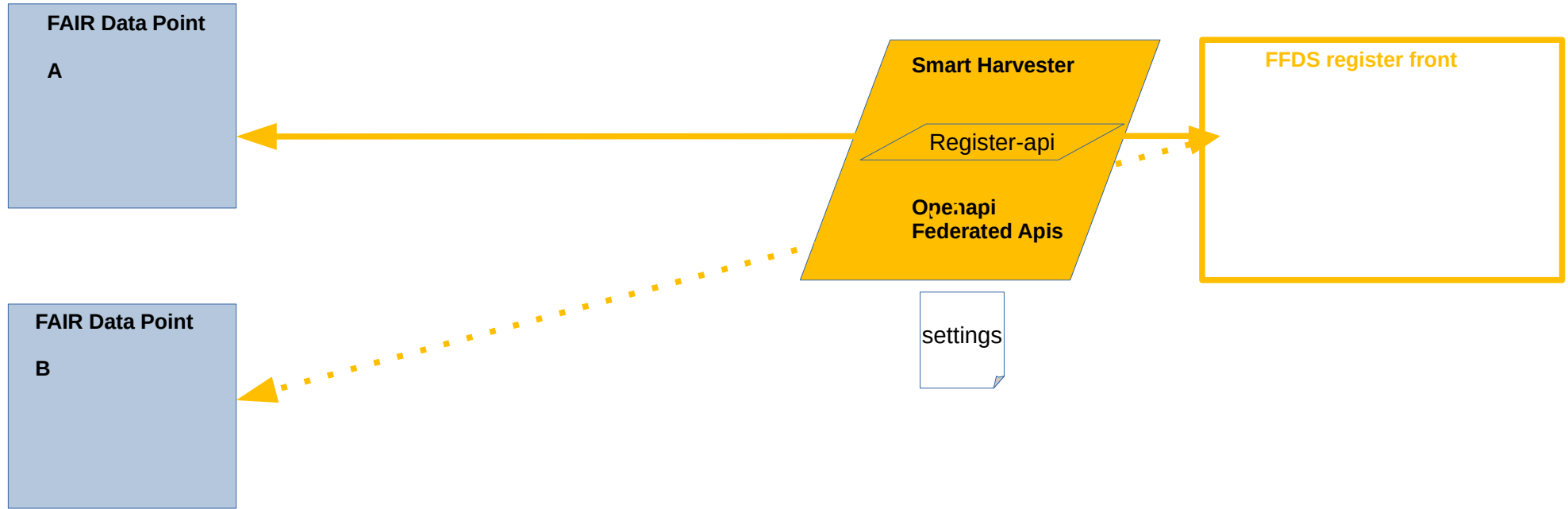
```
title      "EOSC-Pillar-Federated FAIR Data Space"
fdpurl     "https://ffds.eosc-pillar.eu"
fdpemail   "admin@cines-lab.fr"
fdppassword "adminadmin"
smartapiurl "https://ffds.eosc-pillar.eu/harvester"
```

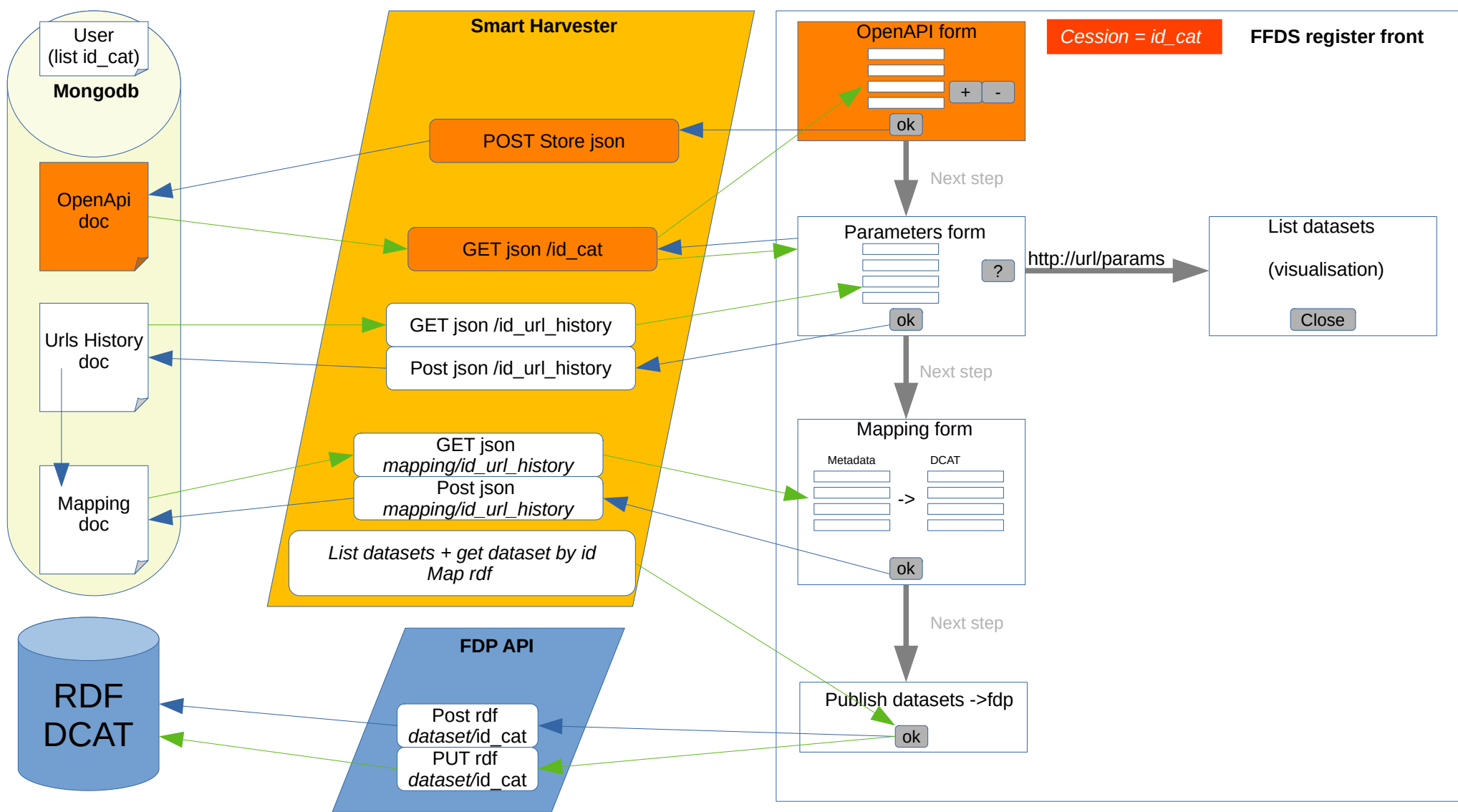
NAME	HOSTS	ADDRESS	PORTS
ingress-rules	ffds.eosc-pillar.eu	51.210.210.211	80, 443

FFDS - Federated FAIR Data Space



FFDS – Generic for multi FDP





FFDS – Opening Front

Fichier conf :
urls
Fdp +credential
Mongo + credential
Smartharvester

J'ouvre le ffds front

conf file existe ?

FFDS-register-api

GET /setting/load

no

form settings

FFDS-register-api

POST /setting

yes

Register
admin

Smart harvester

POST /user

KO

Tests connections

ok

Connexion User

Ou Register User

Smart harvester

GET /user
POST /user

Récup FDP-Token

FDP API

POST /token

Ouvrir menu Repository

Saisir Repository+ publish

Use token

FDP API

POST /catalog
Response (catalog_id)

Catalog_id ok ?

no

yes

Smart harvester

POST /user/repo
(catalog_id)

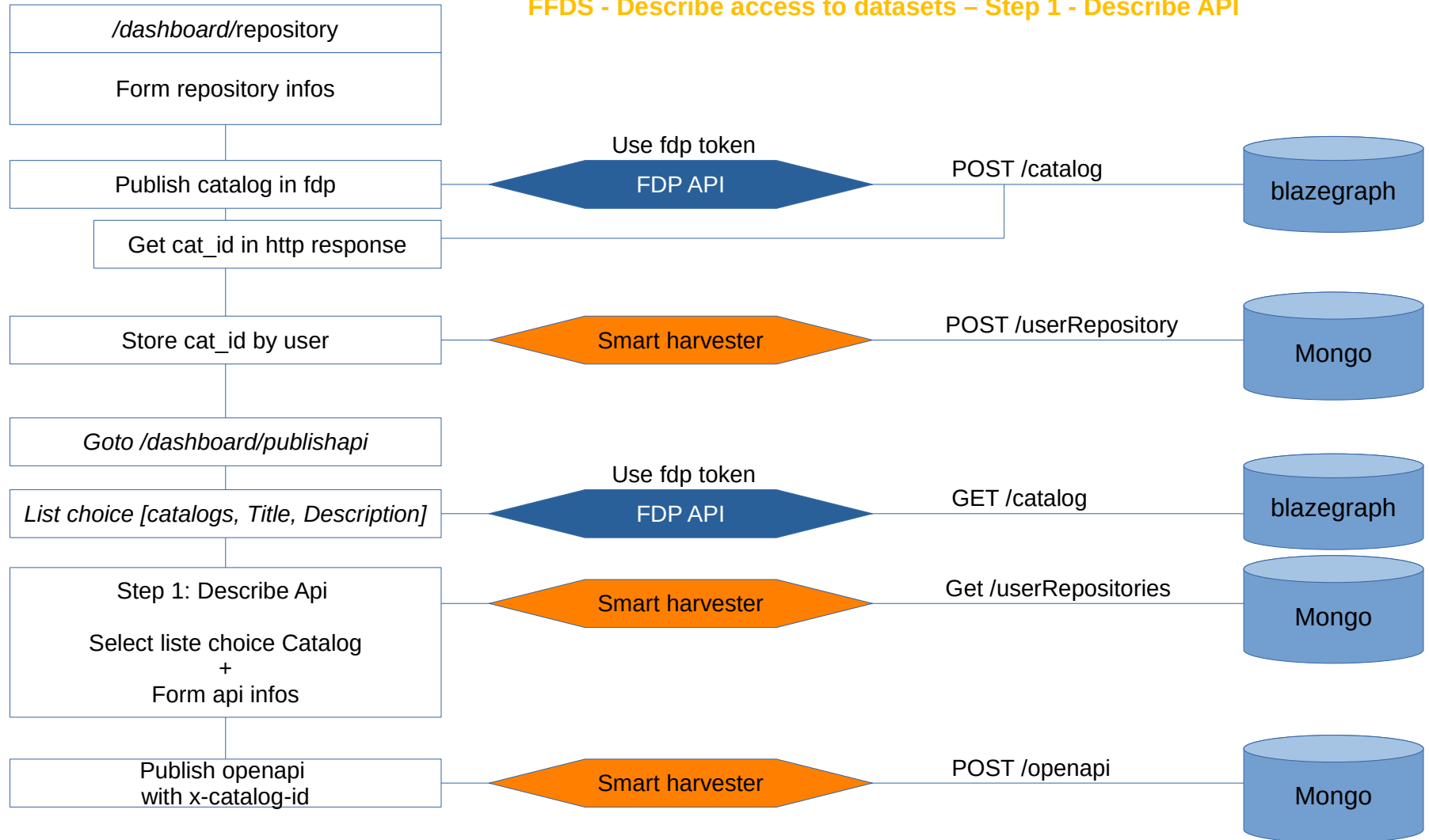
show
error

Mongo

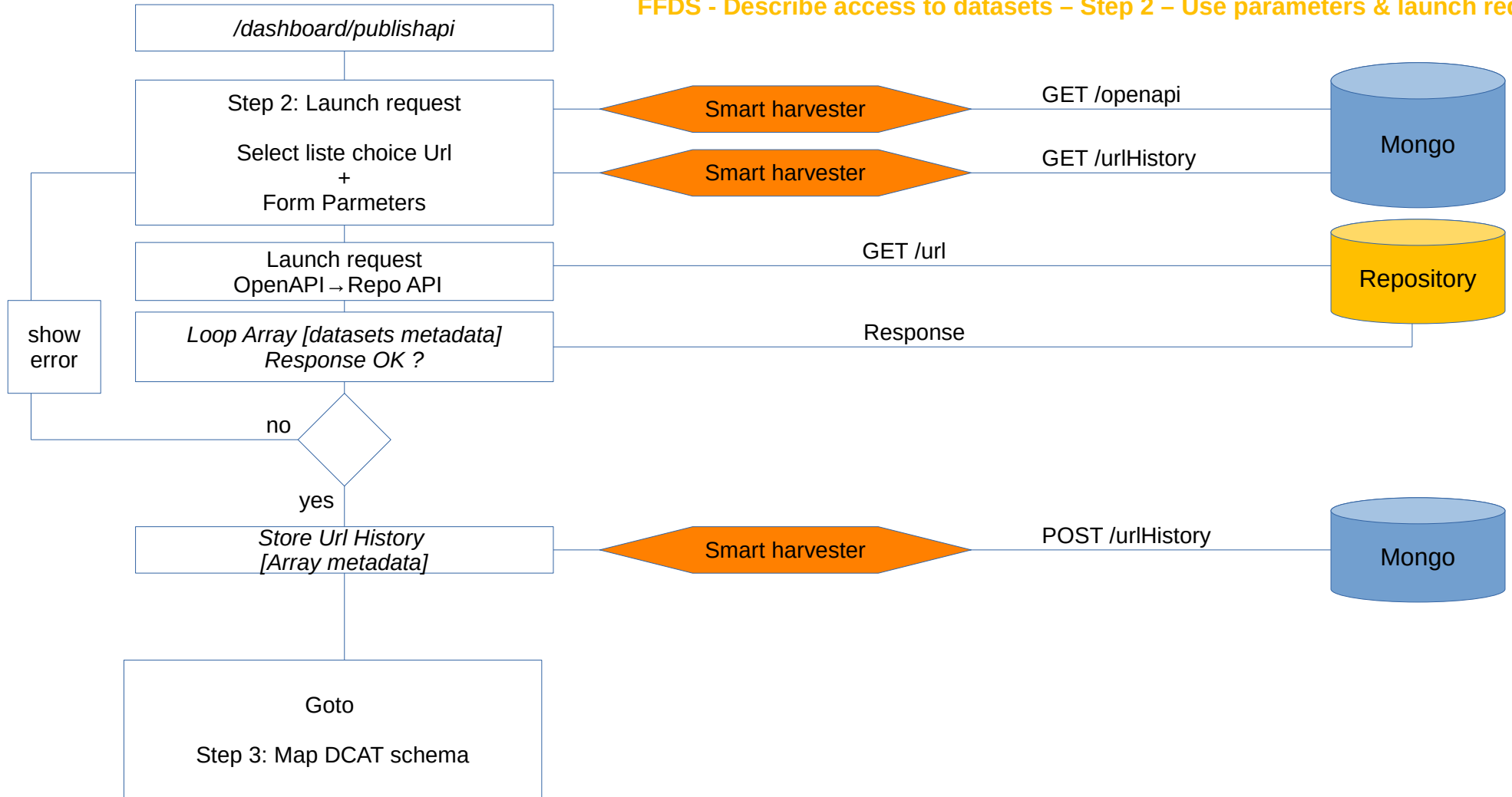
blazegraph

Mongo

FFDS - Describe access to datasets – Step 1 - Describe API



FFDS - Describe access to datasets – Step 2 – Use parameters & launch request



FFDS - Describe access to datasets – Step 2 – Use parameters & launch request

inrae list datasets 0 OAS3

Servers

https://data.inrae.fr/api

datasetlist ▼

Parameters (6)

per_page

10

🗑

q

*

🗑

show_entity_ids

true

🗑

show_my_data

true

🗑

start

100

🗑

type

dataset

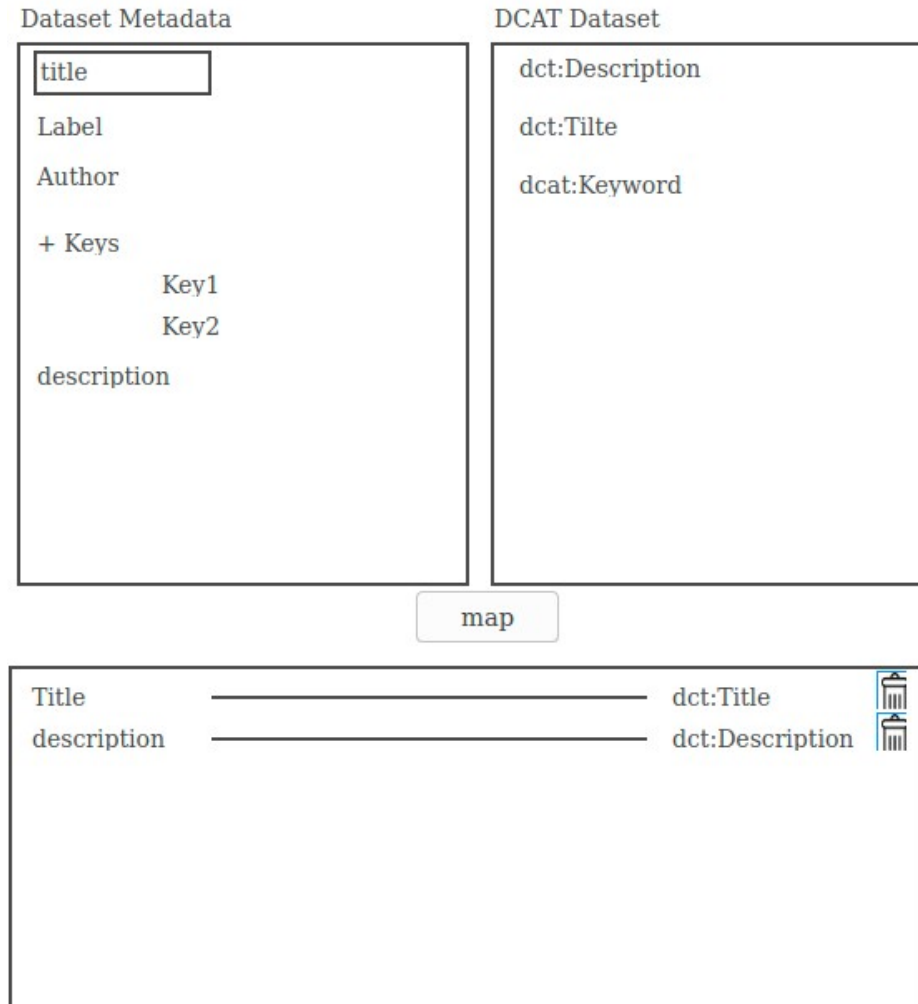
🗑

ADD NEW PARAMETER

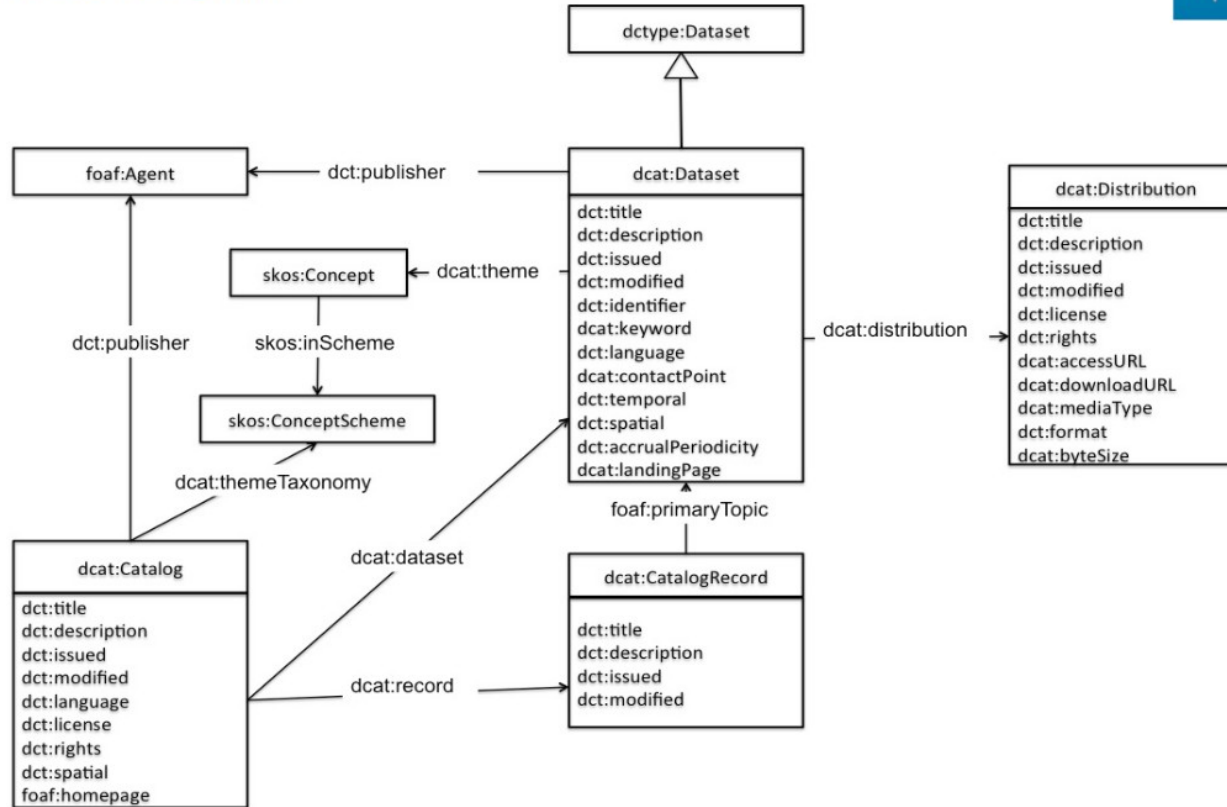
History			
<input type="checkbox"/>	15 Oct 2020 10:49	GET	https://data.inrae.fr/api/search?per_page=10&q=%&show_entity_ids=true&show_my_data=true&st...
<input type="checkbox"/>	12 Oct 2020 09:34	GET	https://sextant.ifremer.fr/geonetwork/srv/fre/csw-EOSC_PILLAR?SERVICE=CSW&REQUEST=Get...
<input type="checkbox"/>	12 Oct 2020 09:34	GET	https://sextant.ifremer.fr/geonetwork/srv/fre/csw-EOSC_PILLAR?SERVICE=CSW&REQUEST=Get...
<input type="checkbox"/>	7 Oct 2020 16:44	GET	https://opensearch.ifremer.fr/granules.atom?datasetId=argo&startPage=0&&timeStart=2020-02-...
<input type="checkbox"/>	7 Oct 2020 16:43	GET	https://opensearch.ifremer.fr/granules.atom?datasetId=argo&startPage=0&timeStart=2020-02-0...
<input type="checkbox"/>	7 Oct 2020 16:42	GET	https://opensearch.ifremer.fr/granules.atom?datasetId=argo&startPage=0&&timeStart=2020-02-...
<input type="checkbox"/>	7 Oct 2020 16:28	GET	https://data.inrae.fr/api/search?per_page=10&q=%&show_entity_ids=true&show_my_data=true&st...
<input type="checkbox"/>	7 Oct 2020 16:28	GET	https://data.inrae.fr/api/search?per_page=10&q=%&show_entity_ids=true&show_my_data=true&st...
<input type="checkbox"/>	7 Oct 2020 16:27	GET	https://data.inrae.fr/api/search?per_page=&q=%&show_entity_ids=&show_my_data=&start=&type=
<input type="checkbox"/>	5 Jun 2020 14:44	POST	https://opendata.cines.fr/herbadrop-api/rest/data/search

FFDS - Describe access to datasets – Step 3 – Map DCAT Schema

FFDS - Describe access to datasets – Step 3 – Map DCAT Schema



W3C DCAT



FFDS - Describe access to datasets – Step 4 – Populate FDP